

EFFECT OF COVID-19 ON CARDIAC PATIENTS

¹Syed Souhan Haider, ²Umair Waqas, ³ Abid Ali, ⁴Ayesha Awan, ⁵Waqar Mahmood Dar and ⁶Amar Khalid

¹Medical Lab Technologist, The University of Lahore, Pakistan.

Email: syedsouhanhaider@shah@gmail.com

²Lecturer, The University of Chenab, Gujrat, Pakistan.

Corresponding author Email: umairwaqas15117@gmail.com

³Associate Professor, The University of Chenab, Gujrat, Pakistan. Email: abid.ali@ahs.uol.edu.pk

⁴Lecturer, The University of Chenab, Gujrat, Pakistan. Email: ayesha.awan@rsmi.uol.edu.pk

⁵Lecturer, The University of Chenab, Gujrat, Pakistan. Email: waqardaruog@gmail.com

⁶Medical Lab Technologist, The University of Lahore, Pakistan. Email: amarkhalid195@gmail.com

Abstract

According to preliminary research, COVID-19 is linked to high rate cardiac arrhythmias. COVID-19 patients who have underlying cardiovascular problems have a higher death rate. Acute coronary syndrome, venous thromboembolism, myocardial injury, and arrhythmias can all be brought on by COVID-19. Among other things. Cardiac biomarkers are essential for the quick and accurate diagnosis, treatment, and prognosis of acute coronary syndrome. It is essential to receive a diagnosis during the "golden period" in order to start therapy right away and maybe reverse cardiac damage. In this study, the risk of cardiac arrest, and arrhythmias such Atrial- Fibrillation (AF) and Brady arrhythmias was evaluated, as well as to see if covid-19 might affect cardiac patients' blood parameters. It will also assist us in determining the degree of cardiac arrest and arrhythmias and how cardiac markers will react following a CVS. We look at people who have been diagnosed with CVS and been a COVID-19 hospital admission during the months of November 2021 and March 2022, data was gathered at the Allama Social Security Hospital in Gujranwala, Pakistan. The research took around 5 months to complete. In this study, 110 patients between the ages of 30 and 60 were recruited after giving their informed permission. The patients in the trial went to the hospital, and Covid 19 samples were taken by trained personnel who were in charge of collecting specimens and ensuring that all vials were properly labeled. Covid 19 samples are collected using a nasopharyngeal swab or an oropharyngeal swab. As indicated in table, our study included 110 Cardiac and COVID-19 patients varying in age from thirty to sixty, with 51 patients being male (46.4%) and 59 being female (53.6%). The age groups of patients shows us the statistics of Cardiac markers (CK-MB, SGOT, CPK, CRP) and CBC (HB, WBC, Platelets and RBCS). The **(Graph 3,4,5 and 6)** shows us the relationship of Cardiac and Covid 19 patients with Cardiac Markers. The **(Graph 7, 8, 9 and 10)** shows us the relationship of Cardiac and Covid 19 patients with CBC Blood parameters. The cardiac markers are disrupted as a result of cardiac arrest, and the patients are diagnosed with cardiac arrhythmia. If a patient is already covid positive, changes in blood parameters will occur. As a consequence, cardiac indicators will be affected more, making the situation worse. As a result, heart rhythms will be disrupted, and blood circulation throughout the body will be disrupted. If the problem is not handled quickly, the patient will automatically get seriously ill. Dysrhythmias and cardiovascular arrests are going to be coming from a systemic illness, and COVID-19 will alter blood parameters, potentially affecting heart circulation in patients with severe cardiac disease.

KEYWORDS: CKMB, CPK, SGOT, CRP, Arrhythmias, Cardiac arrest and COVID19.

INTRODUCTION

As of early May 2020, more than 1 million people in the United States have been affected by the severe acute respiratory syndrome corona virus 2 (SARS-CoV-2)-caused Corona virus disease 2019 (COVID-19), which has emerged as a worldwide pandemic. Early data from China showed that patients hospitalized with COVID-19 had a total cardiac arrhythmia rate of 17%. Arrhythmia risk was higher (44 percent) for COVID-19 patients who were admitted to the critical care unit (ICU).¹ The severe acute respiratory syndrome corona virus 2 (sars-cov-2) is the source of Covid-19, a virus that is extremely infectious and hazardous. It originally surfaced in Wuhan, China, and has since spread around the world. A single-strand positive strand RNA virus called the sars-cov-2 virus causes severe respiratory illness in humans. The corona virus disease 2019 (covid-19), which has killed more than 0.8 million people worldwide, has become a major pandemic between December 2019 and August 2020. The World Health Organization (WHO) has classified COVID-19 a public health emergency of global concern due to its fast spread.² Countries like Italy, the United States, and China have very high rates of sickness. Limited access to testing in many clinical settings contributes to the rapid spread of infection transmission in asymptomatic and early symptomatic kinds. In December 2019, Wuhan, Hubei Province, China, announced the first case of COVID-19 transmission, which was connected to the Huanan Seafood Market.³

The infection has since spread to 216 other locations and areas. According to the World Health Organization (WHO), COVID-19 became a pandemic on January 30, 2020, and was later declared a global pandemic in March 2020.⁴ In general, corona viruses can harm people's health and create financial loss by disrupting the respiratory, digestive, and central neurological systems in both humans and animals. Other corona viruses, such sars-cov-2, cross the species barrier into humans and spread lethal and severe epidemics of respiratory diseases.⁵ The SARS-COVID was 1st discovered in, bats and then spread to various species around the globe. The sars-cov pandemic first hit people in 2003, thanks to animal infections in China's open-air marketplaces.⁶ To prevent further transmission of SARS-CoV-2, the virus that causes corona virus disease 2019 (COVID-19), the Centers for Disease Control and Prevention (CDC) currently recommends that people who have been in close contact with someone who has SARS-CoV-2 infection quarantine (stay away from other people) for 14 days after the last known contact.⁷

Quarantine, on the other hand, may be difficult to maintain for an extended length of time. Shorter quarantines may enhance compliance, and the CDC offers two alternatives for reducing quarantine length depending on local conditions and the availability of testing, for close relationships without symptoms: 1) If no test is performed, quarantine may end on day 10; 2) if a negative test result is received, quarantine may end on day 7.⁸ The term "corona" refers to the spikes that resemble crowns that are seen on the virus's outer surface.⁹ Corona viruses are smaller (65–125 nm in diameter) and have single-stranded RNA with a size range of 26–32 kbs as their nucleic material. Corona viruses are classified as alpha (-cov), beta (-cov), gamma (-cov), and delta (-cov) corona viruses and belong to the corona viruses family.¹⁰ The alpha and beta corona viruses may infect mammals, and human viruses are genetically related to the -cov genus.¹¹

Cardiac biomarkers are at the updated definition of acute myocardial infarction at the heart of the American College of Cardiology and the European Society, of Cardiology (AMI). A biomarker is "an objectively measured and quantified trait that serves as an indication of normal biological processes, pathogenic processes, or the pharmacological response to a therapeutic intervention." There has been more research in this area our understanding of the underlying pathologic processes that occur in patients¹². Several cardiac markers have been used in the diagnosis and treatment of cardiovascular

(CV) illness. Due to a lack of sensitivity and specificity, however, the need for unique, specialized molecules to treat cardiac muscle necrosis persists. In order to boost specificity to CV illnesses such as acute coronary syndrome (ACS) or heart failure, several new drugs have been produced and studied in the previous ten years (HF).¹³ The covs are further divided into families (a, b, c, and d): mers-cov belongs to lineage c, which has more than 500 viral sequences, whereas sars-cov and sars-cov-2 belong to lineage b, which has over 200 known virus sequences.¹⁴ Myocardial necrosis (CK-MB fraction, myoglobin, and cardiac troponins), ischemia (ischemia modified albumin), myocardial stress (natriuretic peptides), myocardial stress under stress, and inflammation and prognosis (inflammatory markers) are the four categories of cardiac markers (C-reactive protein [CRP], soluble CD40 ligand [sCD40L], and homocysteine).¹⁵ As the preferred cardiac markers for patients with ACS, cardiac troponins have exceeded CK-MB and myoglobin in terms of clinical value. Indeed, according to the consensus guidelines of the American College of Cardiology (ACC) and the European Society of Cardiology (ESC), cardiac troponin is essential for defining acute myocardial infarction (MI).¹⁶

According to these recommendations, cardiac troponin is the only biomarker that is suggested for the diagnosis of acute MI at this time due to its superior sensitivity and accuracy in patients who have suspected MI at the time of presentation.¹⁷ Recent studies have found that increases in biomarkers upstream from markers of necrosis, such as inflammatory cytokines, cellular adhesion molecules, acute-phase reactants, plaque destabilisation and rupture biomarkers, biomarkers of ischemia, and biomarkers of myocardial stretch, can help identify patients who are more likely to experience an adverse event.¹⁸ Unknown is the precise mode of transmission for this virus. However, like with other viral pathogens, the most typical mode of transmission is likely to be colloidal suspension transmission via germs, either directly or indirectly. There is currently no evidence that the virus can spread through the air.¹⁹ Although viral fragments have been discovered in faeces samples from symptomatic and recovering individuals, the risk of feco-oral transmission is uncertain.²⁰

The reason will be to explore how covid-19 affects cardiac patients. By conducting this type of research, we will be able to learn how cardiac patients interact with covid-19 and how covid-19 causes more issues in the body of cardiac patients.

Material and Method:

During the months of November 2021 and March 2022, data was gathered at the Allama Social Security Hospital in Gujranwala, Pakistan. This research is cross-sectional and used a practical sampling method. Research took around 5 months to complete. In this study, 110 patients between the ages of 30 and 60 were recruited after giving their informed permission. The patients in the trial went to the hospital, and Covid 19 samples were taken by trained personnel who were in charge of collecting specimens and ensuring that all vials were properly labeled. Covid 19 samples are collected using a nasopharyngeal swab or an oropharyngeal swab.

Nasopharyngeal swab:

We place the swab horizontally (not upwards) in one nostril and move it down the bottom of the nasal tube for a few centimeters until we reach the nasopharynx (resistance will be met). The distance between the nose and the ear provides an idea of how far the swab should be placed, after which we gently twist the swab 180 degrees to ensure an appropriate specimen is acquired. To ensure secretory absorption, leave the 1-2 seconds with the swab in place. Take away the swab then place it into the vial containing vtm by inserting it at least 12 inches below the surface of the media. Remove the extra swab handle and connect the cap firmly to the transport medium vial.

Oropharyngeal swab:

We tell the patient to open his or her mouth for oropharyngeal. With a tongue depressor, push the outer two-thirds of the tongue down, revealing the tonsils and the posterior wall of the throat. Avoid contacting the teeth, tongue, or depressor with the swab. Swab the tonsillar pillars and the posterior oropharynx with the swab. This will induce the patient to vomit for a short time. Insert the swab into the vial of vtm (same vial as the first np swab). Remove the extra swab handle and connect the cap firmly to the transport medium vial. Label the specimen with the patient's ID number, as well as the date and time of collection. Complete specimen tracking log including patient id number, specimen collection date, and time.

COVID-19 test results:-

After sample collection, nucleic acid as from viral sample will be extracted, and parts of its genome will be amplified using reverse transcription PCR (rt-PCR). They now have a larger sample size to evaluate viral strains thanks to this. There are two genes in the sars-cov-2 genome. Positive results occur when both genes are found; unclear results occur when only 1 gene is found; and negative results occur when neither gene is discovered. A thorough blood count will be performed as well (CBC).

Cardiac Evaluation:-

In addition to testing the patient's blood for other compounds like blood fats (including blood lipids), vitamins, and minerals, we take blood from them to look for any cardiac problems. Blood testing can identify the toxins and reveal the extent of your heart muscle damage as well as whether it has occurred. Blood tests such as CKMB, CPK, SGOT, and CRP will also be performed to check the severity and extent of CVS.

Explanatory variable:-

To acquire demographic information and medical co-morbidities, we meticulously reviewed all clinical records. We also kept track a profile for admission, which includes vital signs, lab testing, and antiviral medication administered during the stay. Age, sex, and marital status were among the demographic factors. History of AF, insulin, obstructive sleep apnea, respiratory illness, liver illness, or chronic renal disease. Any past of cardiovascular disease, heart failure, or hypertension. were all considered comorbid illnesses (CKD). We also looked at any previous implanted cardioverter-defibrillator or permanent pacemaker installation procedures.

Inclusion Criteria:-

Cardiac patients who have been involved in the research have been diagnosed with covid-19.

Exclusion Criteria:-

Patients who have had renal illness or any other condition in the past will not be allowed to participate in the trial.

Statistical Analysis:-

To assess the relationship between certain clinical parameters, such as age and sex, we employed logistic regression. CK-MB, CPK, SGOT, CRP. Age-adjusted multivariable models, sex, CK-MB, CPK, SGOT, CRP. The study was used to analyze statistical version 22.

Tables and Graphs:-

Table 1

Statistics			
		Age in Group	Gender
N	Valid	110	110
	Missing	0	0

Table 2

		Age in Group			
		Frequency	Percent	Valid Percent	Cumulative Percent
Valid	30-35	4	3.6	3.6	3.6
	36-40	13	11.8	11.8	15.5
	41-45	48	43.6	43.6	59.1
	46-50	30	27.3	27.3	86.4
	51-55	12	10.9	10.9	97.3
	56-60	3	2.7	2.7	100.0
	Total	110	100.0	100.0	

Table 3

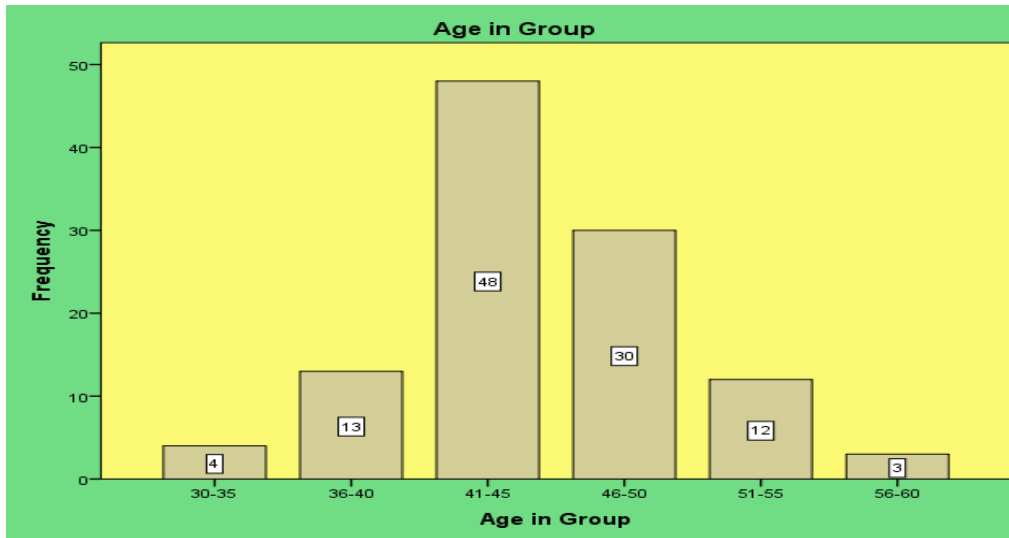
		Gender			
		Frequency	Percent	Valid Percent	Cumulative Percent
Valid	Male	51	46.4	46.4	46.4
	Female	59	53.6	53.6	100.0
	Total	110	100.0	100.0	

Table 4

		Statistics								
Covid19	Cardiac		CKMB	CPK	SGOT	CRP	RBC	HB	WBC	Platlets
Positive	Positive	N	Valid	83	83	83	83	83	83	83
			Missing	0	0	0	0	0	0	0
		Mean	232.08	391.23	46.95	39.04	4.96	14.36	7.67	244.80
	Std. Deviation	38.681	64.843	7.638	6.722	.847	1.805	2.683	75.109	
	Negative	N	Valid	12	12	12	12	12	12	12
			Missing	0	0	0	0	0	0	0
Mean		112.08	133.17	50.08	38.83	5.00	14.67	7.67	256.42	
Std. Deviation	24.224	47.916	11.851	5.167	.739	2.270	2.425	74.667		
Negative	Positive	N	Valid	14	14	14	14	14	14	14
			Missing	0	0	0	0	0	0	0
	Mean	241.36	395.00	50.21	38.64	5.14	14.21	7.93	271.50	

Graph:

Graph 1



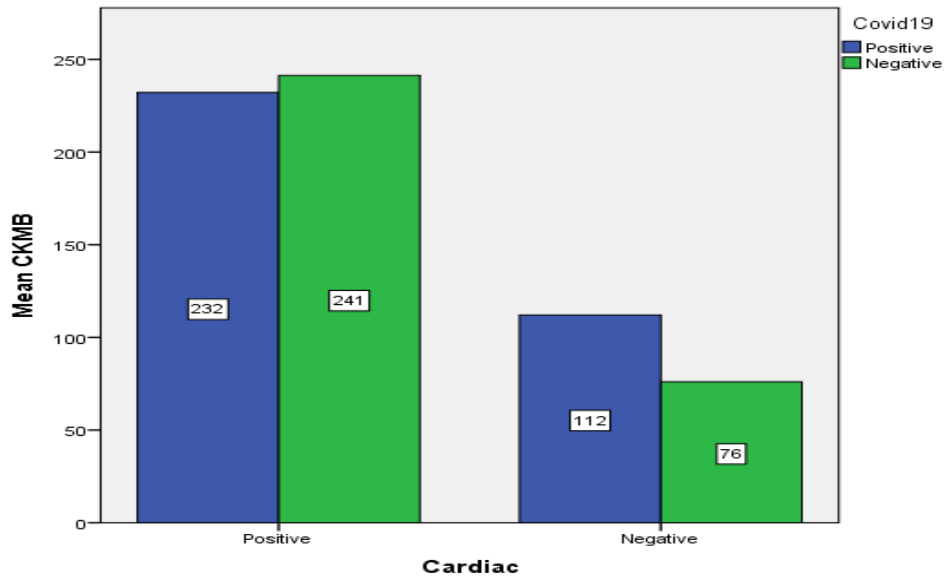
The Graph 1 shows us the Frequency of Patients with different age Group

Graph 2



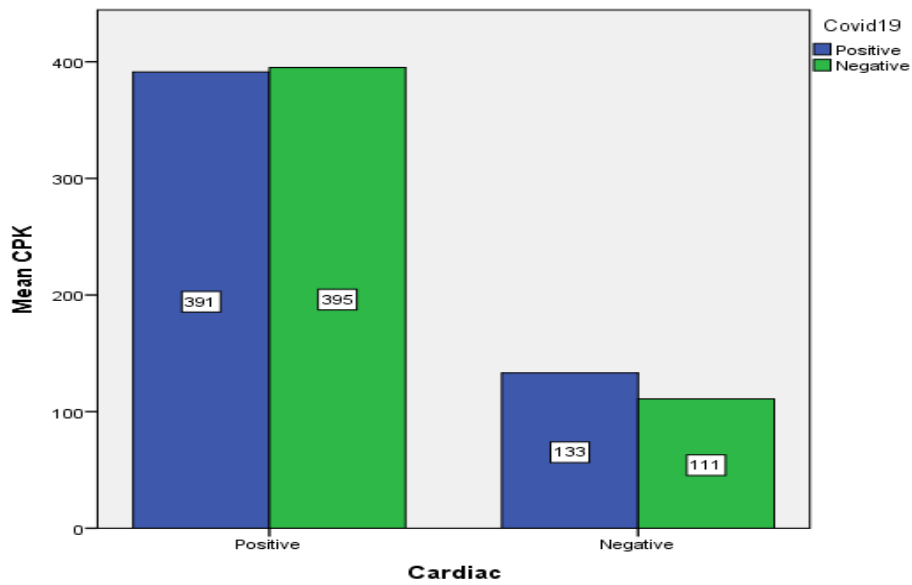
The Graph 2 shows us the frequency of Gender Distribution.

Graph 3



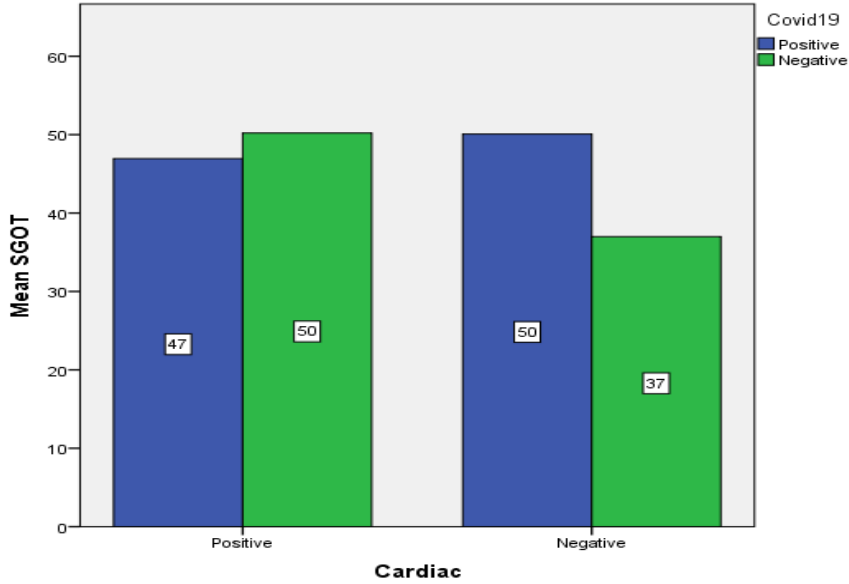
The association between Cardiac and Covid 19 patients and the CK-MB marker is seen in Graph 3

Graph 4



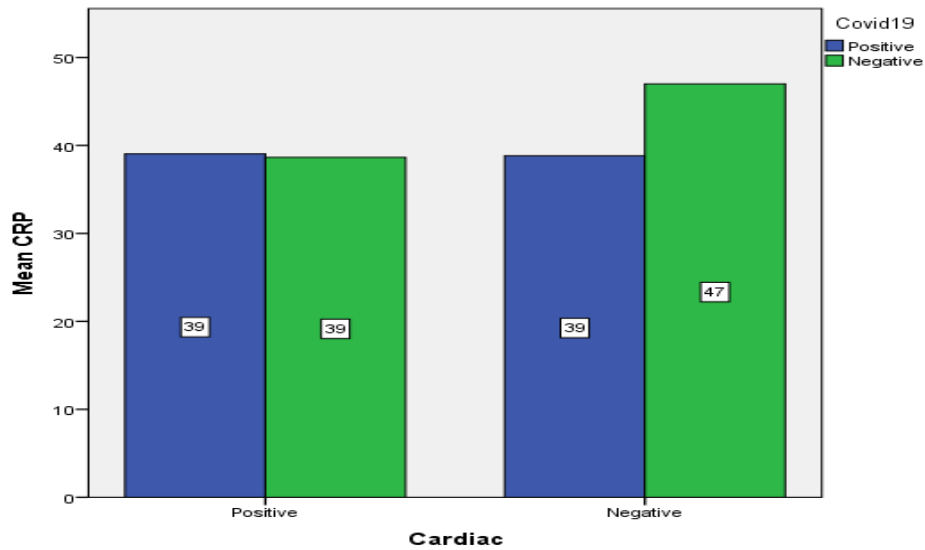
The association between Cardiac and Covid 19 patients and the CPK marker is seen in Graph 4.

Graph 5



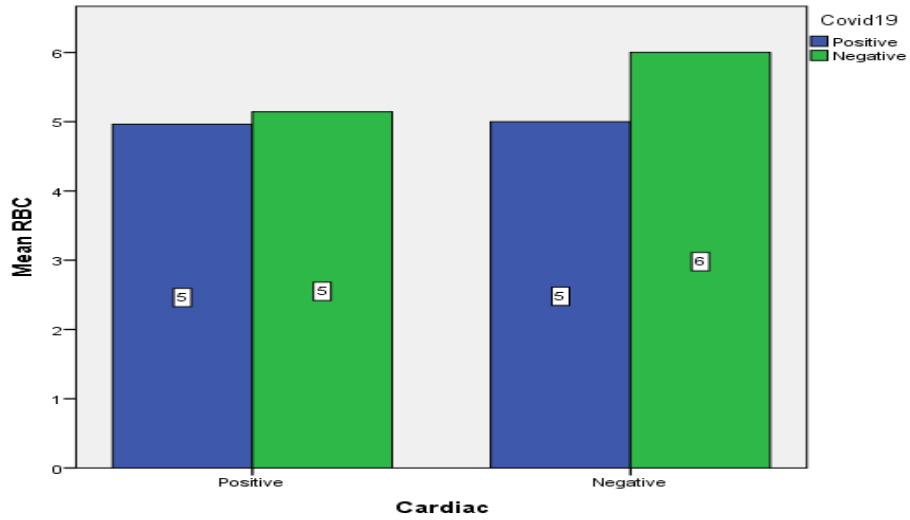
The association between Cardiac and Covid 19 patients and the SGOT marker is seen in Graph 5.

Graph 6



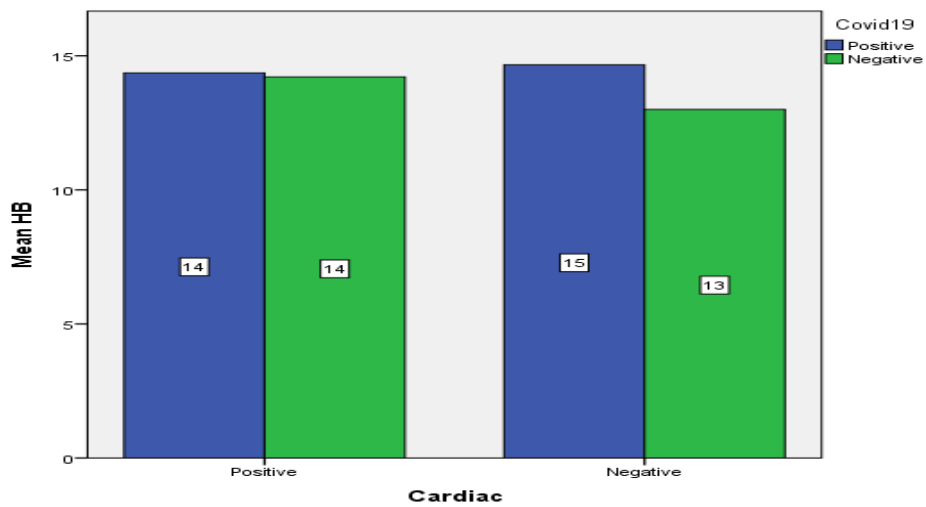
The association between Cardiac and Covid 19 patients and the CRP marker is seen in Graph 6.

Graph 7



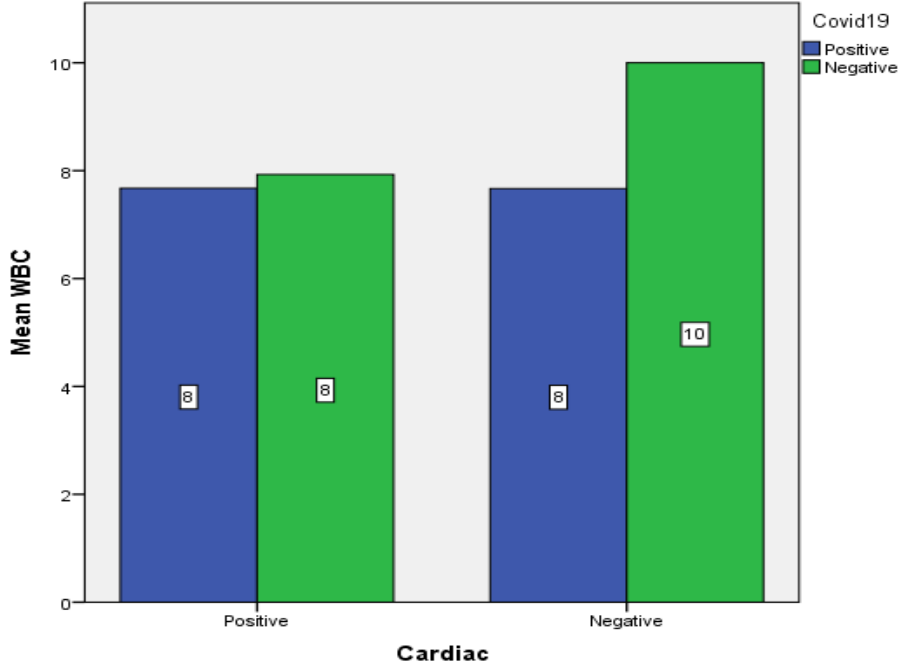
The association between Cardiac and Covid 19 patients and the RBC parameter is seen in Graph 7.

Graph 8



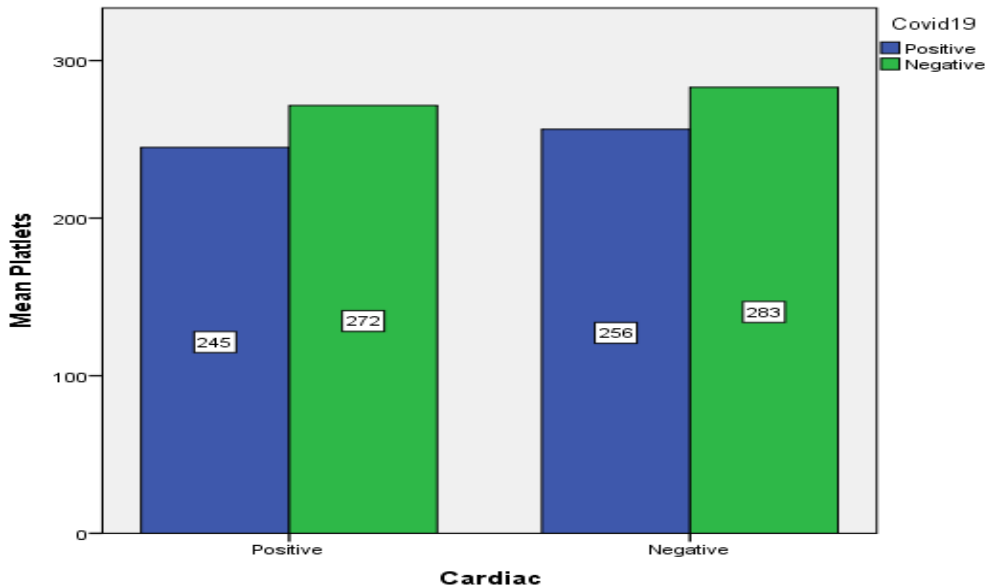
The association between Cardiac and Covid 19 patients and the HB parameter is seen in Graph 8.

Graph 9



The association between Cardiac and Covid 19 patients and the WBC parameter is seen in Graph 9.

Graph 10



The association between Cardiac and Covid 19 patients and the Platelets parameter is seen in Graph 10.

Result:-

As indicated in table, our study included 110 Cardiac and COVID-19 patients between the ages of 30 and 60, with 51 patients being male (46.4%) and 59 being female (53.6%). **(Table 2 and 3 and Graph 2)**. The age groups of patients are shown in **(Table 2 and Graph 1)**, with four individuals between the ages of 30 and 35 having a proportion of (3.6 percent). There were 13 individuals aged 36 to 40 years old with a proportion of (11.8 percent). Another age group, 41 to 45, included 48 patients, with a proportion of (43.6 percent.) Thirty patients, ranging in age from 46 to 50, have a proportion of (27.3 percent). There were 12 individuals in the 51 to 55 age group who had a percentage of (10.9 percent). Three individuals in the 56-to-60-year-old age group have a proportion of (2.7 percent). The **(Table 4)** shows us the statistics of Cardiac markers (CK-MB, SGOT, CPK, CRP) and CBC (HB, WBC, Platelets and RBCS).

The association between Cardiac and Covid 19 patients and the CK-MB marker is seen in **(Graph 3)**. This indicates that if a patient is cardiac positive as well as covid 19 positive, the CKMB level will rise over the usual threshold. If the patient is cardiac positive but not covid-19 negative, the CK-MB level will rise even higher, indicating that the heart muscles have been damaged as a result of cardiac arrest. On the other hand, if the patient is cardiac negative and Covid 19 negative, the CK-MB level will be lower or normal, however if the patient is cardiac negative and Covid 19 positive, the CK-MB level will be somewhat higher than normal. The **(Graph 4)** shows the correlation with covid-19 and cardiac patients with the CPK marker. It demonstrates that if a patient is cardiac positive and also covid-19 positive, the level of CPK marker will be higher than normal, however if the patient is both cardiac positive and covid-19 negative, the level of CPK marker will be somewhat higher. If the patient is cardiac negative and covid 19 positive, the CPK marker level will be close to normal; however, if the patient is cardiac negative and covid 19 negative, the CPK marker level will be normal.

The relationship between covid-19 patients, cardiac patients, and SGOT cardiac marker is seen in **(Graph 5)**. It shows that if a patient is cardiac positive and Covid 19 positive, the level of SGOT will increase more than normal, but if the patient is cardiac positive and Covid 19 negative, the level of SGT will increase more. If, on the other hand, the patient is cardiac negative but covid-19 positive, the SGOT level will rise, indicating that covid 19 has an effect on the SGOT level. If the patient is cardiac negative and covid-19 negative, on the other hand, the SGOT level will stay normal. The association between cardiac patients and covid-19 patients and the cardiac marker CRP is seen in **(Graph 6)**. It reveals that if a patient is cardiac positive and covid-19 positive, the CPK level will be somewhat higher than usual, but the level will remain the same when compared to a cardiac positive and covid-19 negative patient. If the patient is cardiac negative and covid-19 positive, the level will be somewhat higher than normal, but if the patient is cardiac negative and covid 19 negative, the level will be greater than all prior findings.

The current results concern several comprehensive blood profile measures. The connection between RBC and cardiac and covid 19 individuals is depicted in **(Graph 7)**. It shows that if the patient is cardiac positive and covid-19 positive, the RBC level will be normal, and if the patient is cardiac positive and covid-19 negative, the RBC level will also be normal. On the other hand, if the patient is cardiac negative and covid 19 positive, the RBC level will be normal, and if the patient is cardiac negative and over 19 negative, the RBC level will be completely normal. The association between HB and cardiac and covid-19 patients is seen in **(Graph 8)**. It shows that if a patient is cardiac positive and covid-19 positive, the level of HB will rise; similarly, if a patient is cardiac positive but covid-19 negative, the level of HB will rise. This is because cardiac arrest affects the level of HB in the blood. If the patient is cardiac negative and covid-19 positive, however, the level of HB will raise more since covid-19

increases the HB level in the body. If the patient is cardiac negative and covid 19 negative, however, the level will remain normal. The connection between WBC and cardiac and covid 19 individuals is seen in **(Graph 9)**. It reveals that if a patient is cardiac positive and covid-19 positive, the amount of WBC in the blood will fall, however if the patient is cardiac positive but covid 19 negative, the level of WBC in the blood will remain low. If the patient is cardiac negative and covid-19 positive, the WBC level will likewise be elevated; however, if the patient is cardiac negative and covid-19 negative, the WBC level will stay normal. The **(Graph 10)** depicts the link between platelet levels in the blood and cardiac and covid-19 patients. It shows that if a patient is cardiac positive and covid-19 positive, the platelet level will alter somewhat in comparison to a normal person. In comparison to earlier results, if the patient is cardiac positive and covid-19 negative, there will be an increase. If the patient is cardiac negative and covid-19 positive, the platelet level will be disturbed; nevertheless, if the patient is cardiac negative and covid 19 negative, the platelet level will be normal.

Each patient is placed in the arrhythmia category based on the assessment of chosen characteristics such as age, sex, CVS, diabetes, hypertension, Cardiac Markers status, and CBC on admission. At the time of their first presentation and prior to the onset of cardiac arrest, all of the patients who experienced a heart attack were admitted to the ICU. The research also reveals the link between CVS and Covid 19. The cardiac markers are disrupted as a result of cardiac arrest, and the patients are diagnosed with cardiac arrhythmia. If a patient is already covid positive, changes in blood parameters will occur. As a consequence, cardiac indicators will be affected more, making the situation worse. As a result, heart rhythms will be disrupted, and blood circulation throughout the body will be disrupted. If the problem is not handled quickly, the patient will automatically get seriously ill.

Discussion:

Out of 110 individuals admitted to the hospital, 95 had COVID-19, according to our data. Patients admitted to the ICU had a 10-fold greater total acute death rate than individuals who were hospitalized to a non-ICU setting. 97 cardiac patients were found. 25 episodes of AF that occurred by chance, and 9 clinically important brad arrhythmias. According to the research, there are several criteria that may be used to determine the severity of cardiac arrest in individuals. Our findings indicate that the prevalence of cardiac arrests among COVID-19 patients is correlated with the risk of their illness and not only the virus itself. There are differences in cardiac marker levels when compared to normal values. The degree of COVID-19 +ve in cardiac patients is also determined using a complete blood profile. Azithromycin was not given to any of the patients at our facility. Our findings go on to say that virtually all of the heart attacks among our COVID-19 cohort were non-shockable rhythms such as pulseless electrical activity or asystole, which are not shockable. According to our findings, general infections, inflammation, and illness are more likely to play a role in the etiology of heart failure than direct viral infection or necrosis of the myocardium. From March 30, 2020 to May 3, 2020, 163 individuals (including those with pulmonary, autoimmune, cardiovascular, endocrine, and other conditions) participated in a research that included socio-demographic assessments and the 4-Dimensional Symptom Questionnaire.⁴² This study looked at how a severe isolation at COVID-19 in Greece affected the anguish, anxiety, despair, and somatization of people with chronic illnesses. In chronic illness patients, distress and somatization were higher, and anxiety and sadness raised heart activity pressure, which might contribute to cardiovascular disease. Particularly affected were patients with cardiovascular and endocrine disorders. Corona virus is potential to influence blood parameters in the body, as well as the respiratory system, resulting in serious consequences if not addressed appropriately. According to new research at the University of Alabama in Birmingham, there is a higher probability of seeing atrial tachycardia in the ICU population than in the non-ICU group. Long-term

anticoagulant medication should be considered in view of these consistent findings. Thrombotic problems, such as arterial and venous thrombosis, can occur as a result of COVID-19. Endothelial and haemostatic activity is hypothesised to come from the inflammatory mediators and a cytokine response brought on by the infection of vascular endothelium with SARS-Cov-2. If AF is present, this inflammatory state may increase the risk of venous thromboembolism effects, which might result in the development of new cardiovascular disease.³

A meta-analysis and comprehensive study by Emir Yonas on the impact of cardiac arrest on COVID-19 results, was published in 2021. He used the search phrases "heart failure" and "COVID-19" to carry out a thorough literature search in the databases Cochrane Central Database, Medrxiv, SCOPUS, PubMed, and Europe PMC. The result of interest was mortality and a poor prognosis in individuals with underlying heart failure and corona virus disease. About 65 publications did not report on the outcome of interest, whereas four publications were review, two experiments were meta-analyses, three pieces were literature reviews, hence he removed 74 research. COVID-19 increases the likelihood of hospitalization, poor prognosis, and according to his findings, death among people with heart failure. Patients with and without heart failure died at significantly different rates, with heart failure patients dying more often.²² There are some limitations in our research. This research was conducted at a single location that served a big metropolitan population. Therefore, our findings might not be relevant to all COVID-19 patients worldwide. As an outcome, we wouldn't be able to find these individuals' asymptomatic tachycardia as easily. Finally, we only included inpatient follow-up in our research. We are therefore unable to establish if the existence of arrhythmic events affects the long-term health of our COVID-19-treated patients

Conclusion:

The population in the study had a higher prevalence of cardiac arrests and arrhythmias. It shows how covid -19 affects cardiac function in patients who have already been diagnosed with CVS. Cardiac indicators indicate how serious an ailment is. COVID-19 will immediately affect the respiratory system as well as blood function, resulting in an increase in pressure throughout the human circulatory system. This has a direct influence on the heart's circulation and is more likely to happen as a result of systemic sickness or cardiac arrhythmias.

References:

1. Chan JF-W, Yuan S, Kok K-H, To KK-W, Chu H, Yang J, et al. A familial cluster of pneumonia associated with the 2019 novel coronavirus indicating person-to-person transmission: a study of a family cluster. *The Lancet*. 2020; 395 (10223):514-23.
2. Mahase E. Covid-19: WHO declares pandemic because of "alarming levels" of spread, severity, and inaction. *Bmj*. 2020; 368 (March):m1036.
3. Shereen MA, Khan S, Kazmi A, Bashir N, Siddique R. COVID-19 infection: Emergence, transmission, and characteristics of human coronaviruses. *Journal of advanced research*. 2020; 24:91-8.
4. Anjorin AA. The coronavirus disease 2019 (COVID-19) pandemic: A review and an update on cases in Africa. *Asian Pacific Journal of Tropical Medicine*. 2020; 13(5):199.
5. Li F. Structure, function, and evolution of coronavirus spike proteins. *Annual review of virology*. 2016; 3:237-61.
6. Wang M, Yan M, Xu H, Liang W, Kan B, Zheng B, et al. SARS-CoV infection in a restaurant from palm civet. *Emerging infectious diseases*. 2005; 11 (12):1860.

7. Letko M, Marzi A, Munster V. Functional assessment of cell entry and receptor usage for SARS-CoV-2 and other lineage B beta coronaviruses. *Nature microbiology*. 2020; 5(4):562-9.
8. Zhong N, Zheng B, Li Y, Poon L, Xie Z, Chan K, et al. Epidemiology and cause of severe acute respiratory syndrome (SARS) in Guangdong, People's Republic of China, in February, 2003. *The Lancet*. 2003; 362(9393):1353-8.
9. Wan Y, Shang J, Graham R, Baric RS, Li F. Receptor recognition by the novel coronavirus from Wuhan: an analysis based on decade-long structural studies of SARS coronavirus. *Journal of virology*. 2020; 94(7):e00127-20.
10. Bhatla A, Mayer MM, Adusumalli S, Hyman MC, Oh E, Tierney A, et al. COVID-19 and cardiac arrhythmias. *Heart rhythm*. 2020; 17(9):1439-44.
11. Kochi AN, Tagliari AP, Forleo GB, Fassini GM, Tondo C. Cardiac and arrhythmic complications in patients with COVID-19. *Journal of cardiovascular electrophysiology*. 2020; 31(5):1003-8.
12. Amsterdam EA, Wenger NK, Brindis RG, Casey DE, Ganiats TG, Holmes DR, et al. 2014 AHA/ACC guideline for the management of patients with non–ST-elevation acute coronary syndromes: a report of the American College of Cardiology/American Heart Association Task Force on Practice Guidelines. *Journal of the American College of Cardiology*. 2014; 64(24):e139-e228.
13. Jacob R, Khan M. Cardiac biomarkers: what is and what can be. *Indian Journal of Cardiovascular Disease in Women-WINCARS*. 2018;3(04):240-4.
14. Khan IH, Zahra SA, Zaim S, Harky A. At the heart of COVID-19. *Journal of cardiac surgery*. 2020; 35(6):1287-94.
15. Wang Y, Wang Z, Tse G, Zhang L, Wan EY, Guo Y, et al. Cardiac arrhythmias in patients with COVID-19. *Journal of arrhythmia*. 2020; 36(5):827-36.
16. Marijon E, Karam N, Jost D, Perrot D, Frattini B, Derkenne C, et al. Out-of-hospital cardiac arrest during the COVID-19 pandemic in Paris, France: a population-based, observational study. *The Lancet Public Health*. 2020; 5(8):e437-e43.
17. Lok DJ, Van Der Meer P, de la Porte PW, Lipsic E, Van Wijngaarden J, Hillege HL, et al. Prognostic value of galectin-3, a novel marker of fibrosis, in patients with chronic heart failure: data from the DEAL-HF study. *Clinical Research in Cardiology*. 2010; 99(5):323-8.
18. Apple FS, Wu AH, Mair J, Ravkilde J, Panteghini M, Tate J, et al. Future biomarkers for detection of ischemia and risk stratification in acute coronary syndrome. *Clinical chemistry*. 2005; 51(5):810-24.
19. Scquizzato T, Landoni G, Paoli A, Lembo R, Fominskiy E, Kuzovlev A, et al. Effects of COVID-19 pandemic on out-of-hospital cardiac arrests: A systematic review. *Resuscitation*. 2020; 157: 241-7.
20. Roedel K, Söffker G, Fischer D, Müller J, Westermann D, Issleib M, et al. Effects of COVID-19 on in-hospital cardiac arrest: incidence, causes, and outcome—a retrospective cohort study. *Scandinavian journal of trauma, resuscitation and emergency medicine*. 2021; 29(1):1-11.
21. Louvardi M, Pelekasis P, Chrousos GP, Darviri C. Mental health in chronic disease patients during the COVID-19 quarantine in Greece. *Palliative & Supportive Care*. 2020; 18(4):394-9.
22. Yonas E, Alwi I, Pranata R, Huang I, Lim MA, Gutierrez EJ, et al. Effect of heart failure on the outcome of COVID-19—a meta-analysis and systematic review. *The American journal of emergency medicine*. 2021; 46: 204-11.